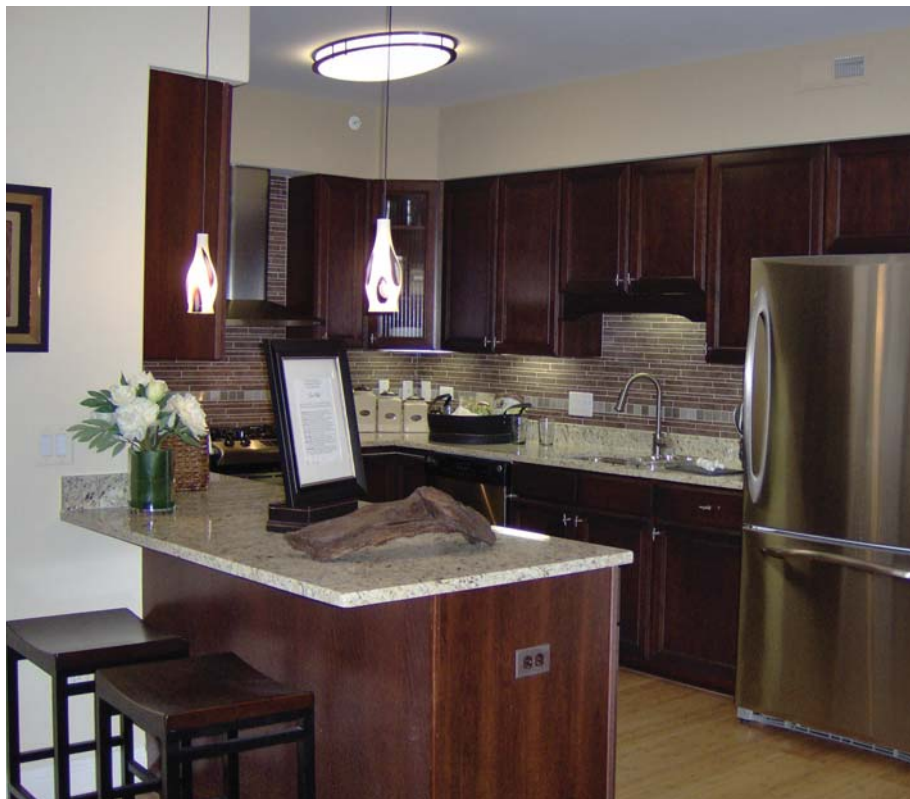


NEW CONSTRUCTION

Greeley Street, Palatine



The Heritage of Palatine is a brand new 48-unit luxury condominium development located at 50 S. Greeley Street in downtown Palatine, walking distance to all of the conveniences of town including the Metra, shopping and dining. Eleven distinctive floor plans are showcased offering 1 bedroom, 2 bedrooms and 2 bedrooms plus dens, 1½ to 2 baths and range in size from 1,126 to 1,716 square feet of living space.

The Colfax is a 2 bedroom, 2 bath design that offers 1,515 square feet of living space. The split-bedroom plan features a dramatic entry with views of the kitchen and impressive great room with access to the balcony. The Colfax layouts located on the 2nd through 4th floors and are priced from \$304,900.

Named “eco-chic” by decorators mb Interiors, Ltd., the Colfax was designed with many uniquely green products such as sustainable, organic, recycled, and reclaimed materials, Energy Star and low-VOC paints. The Colfax features a neutral color scheme of crèmes and mushrooms accented by unique design materials. Some of these eco-chic accents include bamboo wood floors, green-guard recyclable wall paper, shelves made of reclaimed railroad ties, draperies and pillows

made with organic cotton and hemp fabrics, sand cast recyclable aluminum chairs and a table made from reclaimed auto and bicycle tires.

mb Interiors, Ltd. started with Energy Star lighting and appliances, which are noted for their high efficiency, and low-VOC paint, which does not release toxic fumes into the home. The bamboo flooring was chosen because it is considered a sustainable product made from a fast growing plant.

Accessories were also chosen with care including a natural stone bath mat with matching towel hooks. Each stone is hand selected from the rivers and beaches of New England which are then replaced with rough stones. A bedside water glass and pitcher also offer a unique touch as they were made from recycled windshield glass.

Also showcased are all of today’s most innovative colors and finishes including espresso cherry cabinetry, granite countertops and stainless steel appliances from GE.

The Heritage of Palatine sales center is open daily from 10 a.m. to 5 p.m. For more information or a tour of the models, please call 847-705-6238 or visit www.rfranczak.com.



Built On Experience Since 1967

R. FRANCAZAK & ASSOCIATES, INC.

(847) 705-6238

www.rfranczak.com

50 S. Greeley Street, Palatine
From the intersection of Plum Grove
Road and Palatine Road,
go west 3 blocks to Greeley.
Turn left going two blocks south
to Sales Center and models.